

Scanner Plus™

Completing the GoldMine contact record!

Scanner Plus is the integrated scanning solution for GoldMine, from the developers that brought you the award-winning GoldMine add-in, Details Plus. With just two clicks, scan any received letters, invoices or other paper documents, link them to the contact record and make them accessible to any GoldMine user in your company. Below are just some of the features:



- Scan from single or multiple TWAIN compatible scanners
- Configurable scan parameters
- One click notification of GoldMine user - using GoldMine e-mail
- Supports automatic document feeders and automatic duplex scanning
- Works with GoldMine 6.7, 7.x and Premium Edition (8.x, 9.x, GoldMines 2013, 2014 and 2015)
- Scans, saves and links to GoldMine record with just two clicks
- Save in PDF, TIF, JPEG or BMP formats
- Crop or rotate images
- The most cost-effective integrated scanning solution
- Image files can be marked to sync

Scanner Plus™

The screenshot shows the 'Scanner Plus for GoldMine' application window. The interface is divided into several sections:

- Scanner Section:** Includes a dropdown for 'Scanner' (CanoScan LiDE 60), 'Scan type' (RGB Colour), 'Dots per inch' (300), 'Page size' (A4 8.27 x 11.69 in), and 'Rotate post scan' (None). It also has input fields for 'Top', 'Right', and 'Bottom' margins in inches.
- File Section:** Includes 'File format' (PDF (Acrobat)), 'File name' (ScanPAULR20140415-0851-0000000439), 'Use Categories' (checked), and 'Category' (dropdown). It also shows 'Base Folder' and 'Folder' paths.
- GoldMine Section:** Includes 'Document Reference' (Scan20140415), 'Notes' (Image scanned on 15 Apr 2014 at 08:52:05. GoldMine user PAULR. Scanner: CanoScan LiDE 60 on machine D5420B. Scan area: Left: 0.00 Top: 0.00 Right: 8.27 Bottom 11.69 Inches. Resolution: 300 dots per Inch), 'Sync document' (checkbox), and 'Notify User' (checkbox) with a dropdown for 'PAULR'.
- Scanner parameters Section:** Includes 'Multisheet' (checkbox), 'Use automatic feeder' (checkbox), 'Double sided' (checkbox), 'Manual multisheet' (checkbox), and 'Use scanner interface' (checkbox).
- Rotation, Cropping and Scan Area Section:** Includes 'Rotation' (dropdown with icons), 'Apply crop to future scans' (checkbox), and 'Apply rotation to future scans' (checkbox). It also shows 'Total pages: 1' and a page number input field.
- Buttons:** 'Scan to File', 'Scan & Preview', 'Settings', 'Save', 'Help', 'About', and 'Close'.

Callout boxes point to the following features:

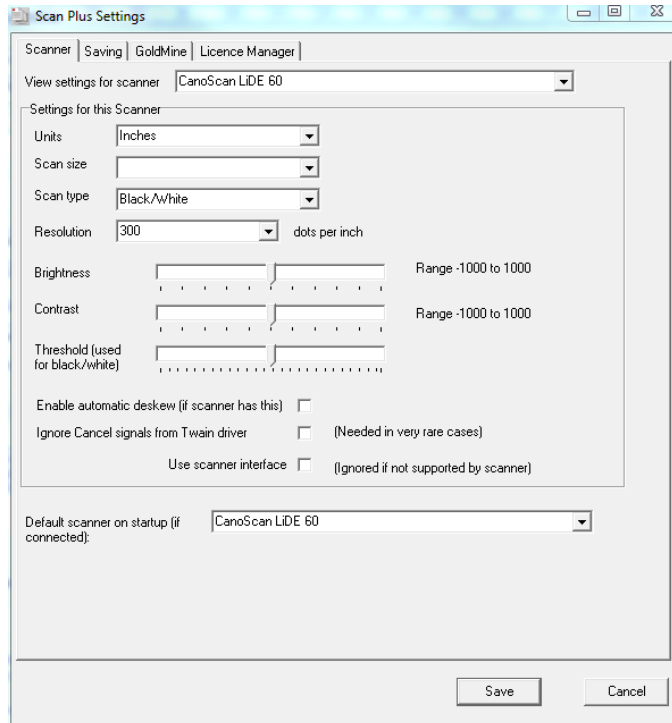
- Select scanner in use:** Points to the 'Scanner' dropdown menu.
- Preview area:** Points to the large image area on the right showing a scanned document with the Solica logo.
- Select file format:** Points to the 'File format' dropdown menu.
- Suggests unique name:** Points to the 'File name' text field.
- Option category added to folder:** Points to the 'Category' dropdown menu.
- Automatically links to GoldMine Links tab:** Points to the 'Notes' text area.
- Notify user by GoldMine e-mail message:** Points to the 'Notify User' checkbox.
- Supports multisheet, automatic document feeders and duplex scanning:** Points to the 'Use automatic feeder', 'Double sided', and 'Manual multisheet' checkboxes.
- Rotate and crop scans:** Points to the 'Rotation' dropdown and 'Apply crop to future scans' checkbox.

Scanner Plus™

Key Features

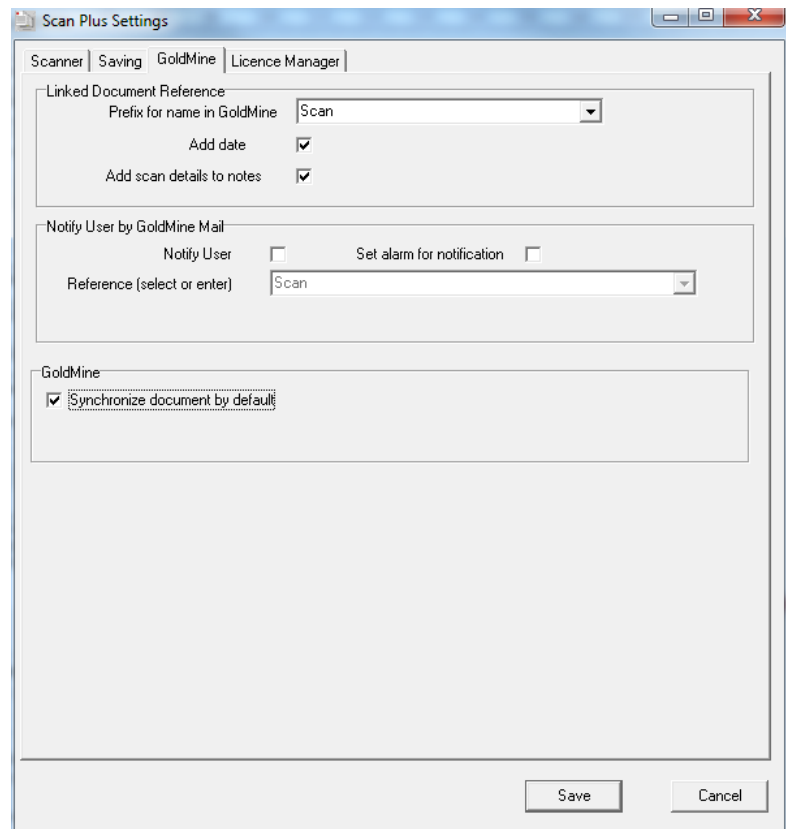
In Scanner Plus, each scanner has default settings which can be changed by using the settings tab.

Commonly varied settings can also be set on the front screen



The default folder, file format and name of the file to be saved is also configured in settings. The folder can include items such as the username, month and year (exactly like GoldMine's mailbox attachment settings).

Optionally a category can also be added to the path.

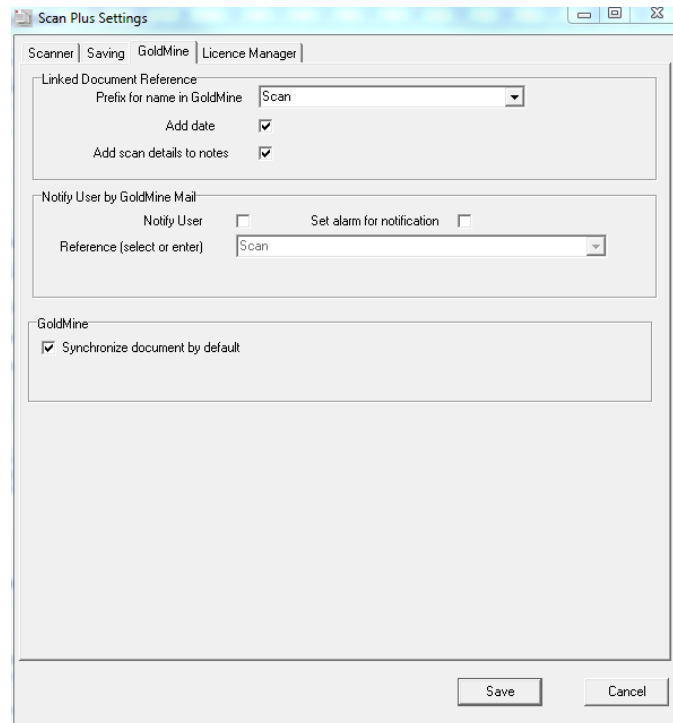


Scanner Plus™

A default reference for the GoldMine Links tab entry can be set up in settings.

Scanner Plus can also notify a recipient of the document (for example if a letter is received) by GoldMine e-mail linked to the contact.

Settings allow the default reference and alarm status to be set. Ideal in workflow environments!



Documents can be rotated and cropped. Settings can be automatically applied to future scans in that session – for example if you have a sequence of documents to scan



Scanner Plus was developed by Paul Redstone at Solica Consulting. In 2011 the CRM business was sold to Serversys and Solica clients transferred but in October 2012 Clew Consulting (owned by Paul Redstone) purchased the rights to Details Plus and other Solica Consulting add-ons from Serversys. Clew Consulting now provides support and new licence sales.

Common Questions

Where does Scanner Plus store images? In a folder or folder specified in settings, which can be changed on the front scan page. The location and file name can be automatically set up and the defaults will often be the best.



Scanner Plus™

How many scanners can I use on a system? As many as you like. Scanner Plus is licensed on the total user count, not on the number of scanners.

Which versions of GoldMine are compatible with Scanner Plus? Scanner Plus works with all versions of GoldMine which use the new COM interface – so 6.7, 7.x as well as 8.x, 9.x (Premium), GoldMine 2013, GoldMine 2014 and GoldMine 2015. This is fast, powerful and requires no configuration – just that GoldMine is running.

Is Scanner Plus sync aware? Images can be set to sync or not sync. A central default can be set on a screen by screen basis.

Does Scanner Plus work on networks? Yes and this is easily set up. Just install the whole program on the network then minimal runtime on workstations. Settings can be stored centrally on the network so be shared by all users. However note than network scanners are not supported unless they have a TWAIN driver.

How can I evaluate Scanner Plus? Download a copy from the Clew Consulting website at www.clew-consulting.com. This is fully functional but adds a large block and notice to each scanned image. Buy a licence and the unlock code removes this. All your settings are preserved when you convert the evaluation to live version. **We recommend you do this anyway to check compatibility with your scanner as the compliance of TWAIN drivers seems poor.**

Will Scanner Plus run on laptops or remote sites? Yes. The same licence covers all sub-sites and undocked users.

What scanners are Scanner Plus compatible with? Any TWAIN scanner should be OK, but there are many variations in TWAIN devices and compliance cannot be assumed. **We suggest you try the Scanner Plus trial version first with your scanner. Refunds for scanner compatibility issues cannot be given.**

Will Scanner Plus deal with international versions of GoldMine? Yes, but all screens and messages are currently in English.

How do I get new versions of Scanner Plus? As with other Clew Consulting add-ins at the moment, upgrades are free and designed to be simply installed over the top.

Licensing and Pricing

Scanner Plus is licensed in a similar way to GoldMine and (at least) the same number of licences must be purchased as the GoldMine licence count. On a multi-site GoldMine system it is the total licence count at the central site which matters, but Scanner Plus can then be used at all sub-sites and undocked sites. The Scanner Plus unlock code enforces these restrictions, so if you are buying more GoldMine licences, contact Clew Consulting at the same time for a new licence code. Scanner Plus is also unlocked for one particular GoldMine master licence number only, though in the event that you change these (for example when upgrading from GoldMine 6.7 to GoldMine 7) we'll provide a new unlock code.

Scanner Plus costs £250 for a Single user licence including the initial licence and one GoldMine user, then £30 for each subsequent GoldMine licence. **Example prices** are shown **below**. Note to convert to other currencies we suggest you check rates on Google or similar then add a few percent for the charge your credit card provider makes – we charge your credit cards in pounds and your card provider does the conversion.

There is also competitive upgrade pricing with a discount of 25% for users of Scan2Gold or GoldScan.

Example number of GoldMine licences *	Normal Price (Pounds)	Competitive discount for GoldScan, Scan2Gold
Single User	£250	£187.50
5	£370	£277.50
10	£520	£390
25	£970	£727.50
50	£1720	£1290
100	£3220	£2415

and so on...

* The number of Scanner Plus licences you order must meet or exceed your current number of GoldMine Licences.

Payment is required at time of order and is by credit card charged in pounds; the billed amount will be converted to your local currency on your bill.

Reseller terms are available to approved GoldMine resellers.



Scanner Plus™

Support

New versions and releases are currently free and expected to remain so, as with most of our other add-ons. E-mail support is also currently free and expected to remain so – simply e-mail support@clew-consulting.com. Telephone and remote support is now not free but is paid for on a per-incident basis. Please see our web site for details.

Please note that support covers the core product only. With the huge number of different scanners in use and the fact that many have suspect TWAIN interfaces, we cannot undertake blank coverage of this. We will however try to respond to issues with particular scanners if possible. We always suggest you test Scanner Plus with your scanner before purchasing. The evaluation version will allow you to do this.

Evaluation

You can download a free evaluation copy of Scanner Plus at www.clew-consulting.com. This will work on any GoldMine system and PC and is fully functional except that it writes a block to the centre of each image. It can be converted to a full version by simply purchasing an unlock code – the evaluation and full version software are the same.

Ordering

The Scanner Plus evaluation contains an order form, accessible via Start|Program Files|Scanner Plus or in file Order Form.doc. There is also a downloadable order form on our web site. Simply fill this out, giving details of your GoldMine licence number then e-mail to us. A PayPal invoice will be e-mailed to you. Once payment is made we'll e-mail you an unlock code and mail you a receipt. Order from your GoldMine reseller or from Clew-Consulting directly.

GoldMine is a registered trademark of FrontRange Solutions Inc. Scanner Plus and Details Plus are trademarks of Clew Consulting Limited. Other products and brands are registered trademarks or trademarks of their respective owners/companies.